



CHEMIPON[®] B Series BX

Diaphragm type metering pump



PTFE



SUS



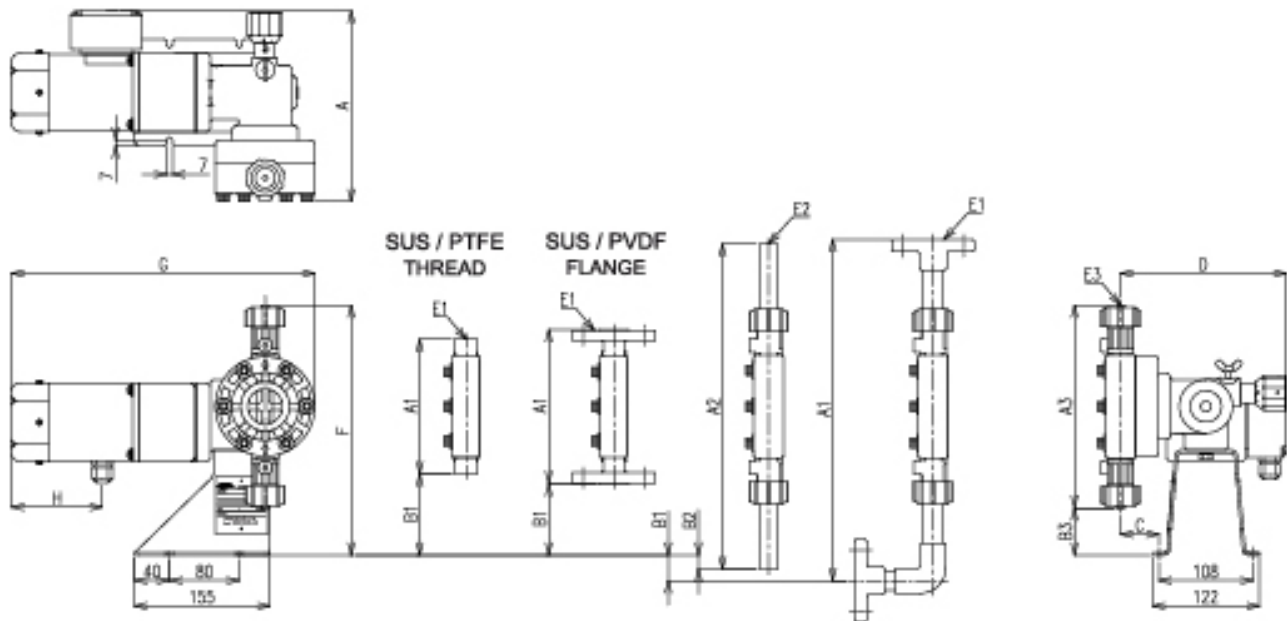
PVC

www.shuneiko.com

NIKKISO EIKO

CHEMIPON® B Diaphragm Type Metering Pump - Series BX

DIMENSIONS



| MODE | MATERIAL | A | A1 | A2 | A3 | B1 | B2 | B3 | C | D | E1 | E2 | E3 | F | G | H |
|------------|------------|-----|------------|-----|-----|----|-----|----|----|-----|--------------------|-------------|------------------|---------|-------------|-----|
| BX01.03.05 | PVC | 232 | 364 | 343 | 166 | 16 | 2 | 87 | 37 | 183 | 15A JIS 10K FLANGE | VP16 UNION | Ø6 IDXØ110D HOSE | 253 | *309 291 | 77 |
| | SUS / PVDF | | 156 | — | — | 92 | — | — | | | 248 | *308 290 | | | | |
| | SUS / PTFE | | 207 | 106 | — | — | 117 | — | | | — | 223 | *300 282 | | | |
| BX10.20.30 | PVC | 232 | 376 | 355 | 178 | 22 | 8 | 81 | 37 | 183 | 15A JIS 10K FLANGE | VP16 UNION | Ø6 IDXØ110D HOSE | 259 | 289 | 77 |
| | SUS / PVDF | | 176 | — | — | 82 | — | — | | | 258 | 293 | | | | |
| | SUS / PTFE | | 207 | 126 | — | — | 107 | — | | | — | 233 | — | | | |
| BX50 | PVC | 232 | 376 | 355 | 214 | 22 | 8 | 63 | 37 | 183 | 15A JIS 10K FLANGE | VP16 UNION | Ø9 IDXØ150D HOSE | 277 | 289 | 77 |
| | SUS / PVDF | | 233 | 156 | — | — | 92 | — | | | — | 38 | 184 | 248 | 293 | |
| | SUS / PTFE | | 209 217 | 134 | — | — | 103 | — | | | — | 38 42 | 184 188 | PT 1/4" | 237 | |
| BX70.100 | PVC | 232 | 391 | 373 | 232 | 29 | 16 | 54 | 44 | 190 | 15A JIS 10K FLANGE | VP16 UNION | Ø9 IDXØ150D HOSE | 286 | 348 | 104 |
| | SUS / PVDF | | 239 | 176 | — | — | 82 | — | | | — | 43 | 189 | 258 | 351 | |
| | SUS / PTFE | | 217 | 154 | — | — | 93 | — | | | — | — | — | PT 3/8" | 247 | |

※BX01 Unit:mm

SHUN EIKO CO., LTD.

NO.11, KUNG ERH RD., LINKOU DIST,
NEW TAIPEI CITY, TAIWAN
TEL: 886-2-26015831
FAX: 886-2-86011017

CHEMIPON[®]B Diaphragm Type Metering Pump - Series BX

Maximum discharge capacity reaches more than **2 L/min!!!!!!**

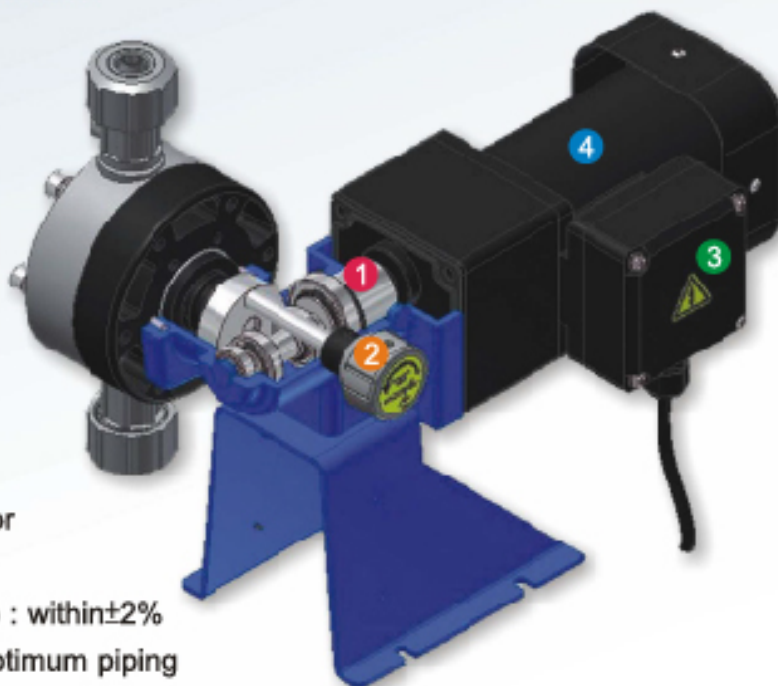
NIKKISO EIKO developed series BX with the experienced technologies and the customer's advantages.

① Double cam design, stable operation.

② Manual control is easy.

③ Cover with wire box.

④ Motor level upgrade to F (IP55)



FEATURE

- ★ Compact, easy to install
- ★ Various materials for liquid ends, selection of the suitable materials or the applied liquids is possible
- ★ Discharge accuracy (Repeatability) : within $\pm 2\%$
- ★ Various types of connections for optimum piping
- ★ Easy maintenance

IDENTIFICATION

| | | | | | | | | | |
|-----------|-----------|----------|----------|----------|----------|----------|----------|------------|-----------|
| BX | 10 | - | P | C | F | - | H | 110 | SP |
| ① | ② | - | ③ | ④ | ⑤ | - | ⑥ | ⑦ | ⑧ |

① Series name

② Type No .

③ Pump head P : PVC S : SUS304 M : SUS316
 D : PVDF T : PTFE

④ Ball valve C : Ceramic S : SUS304 M : SUS316

⑤ O-ring/Gasket E : EPDM F : FPM T : PTFE

⑥ Connection F : Flange H : Hose
 K : Thread U : Union

⑦ Power

110: 1Ø 100V~110V (50/60Hz)

120: 1Ø 200V~240V (50/60Hz)

320: 3Ø 200V~240V (50/60Hz)

338: 3Ø 380V~415V (50/60Hz)

344: 3Ø 440V~480V (50/60Hz)

⑧ Special design

K : For high viscosity liquid (Polymer)

BX SPECIFICATION

| Model | Diaphragm Dia. (mm) | Stroke length (mm) | Stroke speed (SPM) | | Speed ratio | Discharge capacity mL/min (0 MPa) | | Max. Dis. Pressure (MPa) | Motor output (W) | Standard pipe (PVC) |
|--------------|---------------------|--------------------|--------------------|------|-------------|-----------------------------------|------|--------------------------|------------------|---------------------|
| | | | 50Hz | 60Hz | | 50Hz | 60Hz | | | |
| BX01 | φ42 | 2 | 16 | 20 | 1/90 | 14 | 16 | 1 | 40 | Hose type φ6 x φ11 |
| BX03 | | | 75 | 90 | 1/20 | 77 | 92 | | | |
| BX05 | | | 120 | 144 | 1/12.5 | 120 | 145 | | | |
| BX10 | φ65 | 4 | 100 | 120 | 1/15 | 320 | 385 | 0.5 | 90 | |
| BX20 | | | 75 | 90 | 1/20 | 430 | 530 | | | |
| BX30 | | | 120 | 144 | 1/12.5 | 730 | 885 | | | |
| BX50 | | | 166 | 200 | 1/9 | 1025 | 1215 | | | |
| BX70 | φ84 | 8 | 75 | 90 | 1/20 | 1475 | 1815 | 0.5 | 90 | Hose type φ9 x φ15 |
| BX100 | | | 120 | 144 | 1/12.5 | 2355 | 2845 | | | |

- Test condition: Normal temperature water. (Self-priming 1M)
- Anti siphon check valve can maintain discharge capacity stably.
- Discharge performance might change in different condition.

MATERIALS

| Diaphragm Head | Diaphragm | Ball Valve | Valve Seat | Joint | Applied chemicals |
|----------------|-----------|------------|-----------------|--------|--|
| PVC | PTFE/EPDM | CERAMIC | FPM/EPDM PVC | PVC | Sulfuric acid, Hydrochloric acid, Sodium hypochlorite, PAC, Urea Phosphoric acid |
| PVC | | SUS304 | SUS304 | PVC | Active carbon, Sodium hydroxide, Flocculant, Lime. |
| SUS304 | | SUS304 | SUS304 | SUS304 | Solvents, Alcohol |

BX ACCESSORIES



| | Name | Model | Applied pump model |
|----------------------|-------------------------|--------------|--------------------|
| Standard accessories | Anti-siphon check valve | B55PV | BX01~BX30 |
| | | B73PV | BX50~BX100 |
| Optional accessories | Filter | B64PV | BX01~BX30 |
| | | B66PV | BX50~BX100 |